

2019 Tesuque Community Plan Update



Purpose

The 2013 Tesuque Community Plan is well supported by the community, but there is a need to update the plan for consistency with the Santa Fe County Sustainable Growth Management Plan (SGMP). The plan update will also provide a foundation for consistency between the Tesuque Community Plan and the Tesuque Community District Overlay in the Sustainable Land Development Code (SLDC) and will inform potential changes to the Tesuque Community District Overlay in the SLDC.

Process

- Overview of Tesuque Community Plan and SGMP
- Identification of plan areas to be updated
- Review draft and finalize 2019 Tesuque Community Plan Update
- Community wide meetings for community plan update
- Review draft and finalize Tesuque Community District Overlay
- Public Hearings- Planning Commission and Board of County Commissioners

Timeline

2019 Tesuque Community Plan update is anticipated to take approximately 3- 6 months. The Tesuque Community Overlay District will require additional community meetings and Public Hearings for Board approval.

Public Participation

This process is open to all community members. We're looking for people to represent the diversity of the community to include geographical representation of property owners, residents, business owners and other stakeholders such as the equestrian, agriculture, arts, and economic development communities.

Next Steps

Santa Fe County is looking for community members to participate in this process. If you are interested, please email Lucy Foma at lfoma@santafecountynm.gov. We will contact you regarding our initial planning committee meeting!



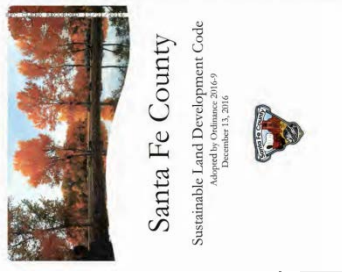
Santa Fe County Policy Documents



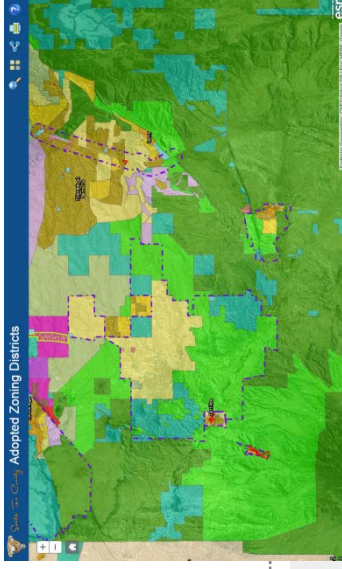
SGMP



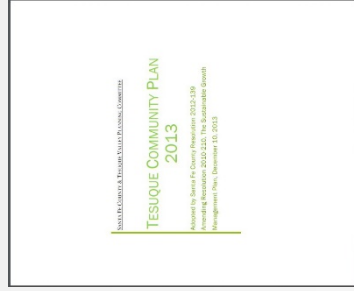
SLDC



Zoning Map



Tesuque Community Plan



2013



Zoning Map